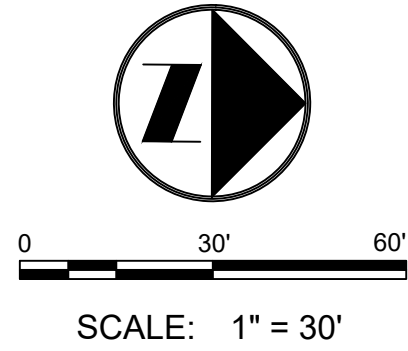
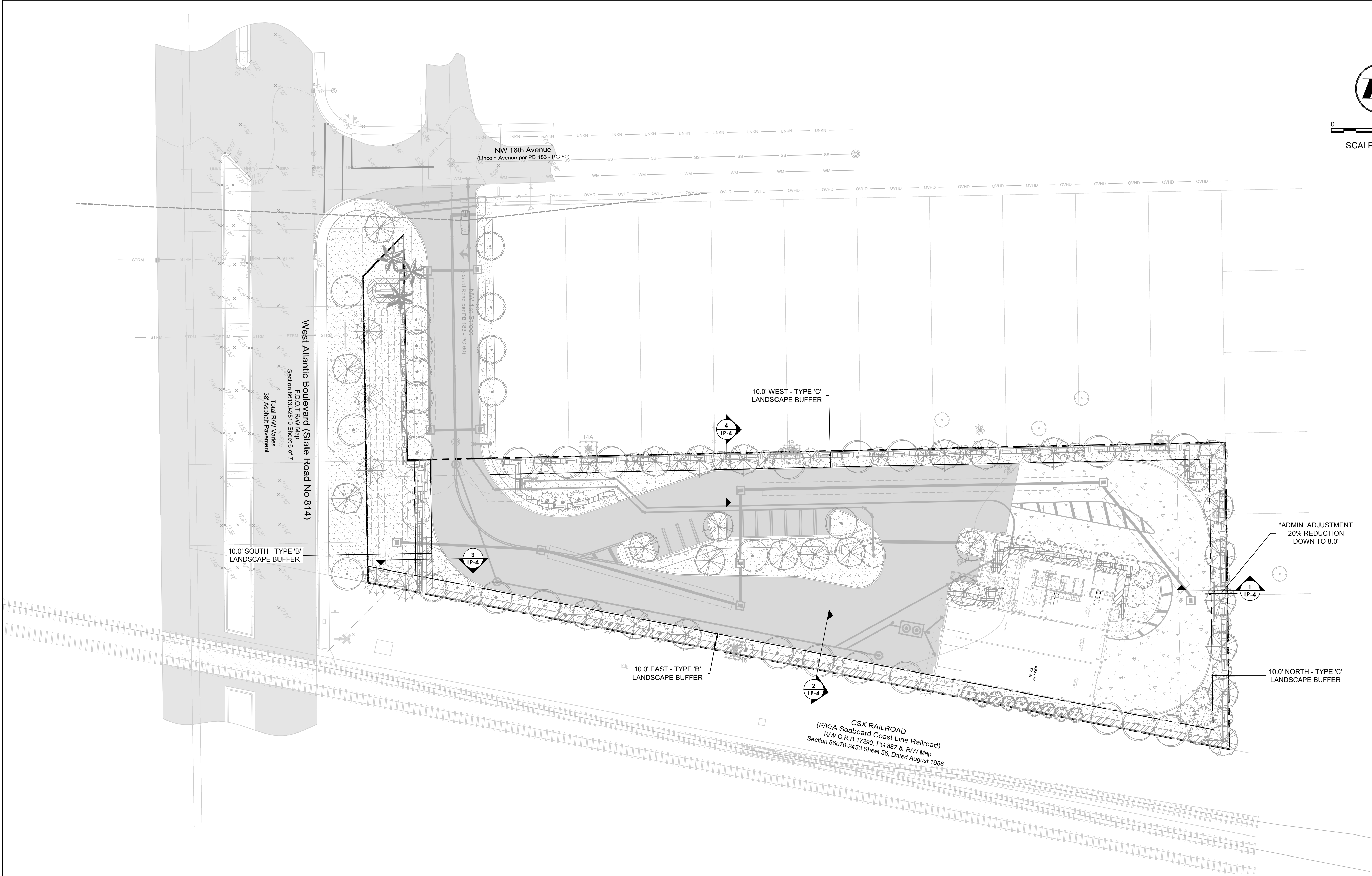


\\ctarfile02\Landscape\2024\24-0055-001-01 1501 Atlantic Truck Wash\Drawings\24-0055-SECTIONS.dwg [LP-3] Sep 08, 2025 12:45pm NPASTRE




AAC

PZ24 12000026

08.20.2025

DATE:	02/26/25
SCALE:	AS SHOWN
DESIGN BY:	AKR
DRAWN BY:	AKR
CHECKED BY:	NDP
APPROVED BY:	SWP



Craven-Thompson and Associates, Inc.
Engineers • Planners • Surveyors
3563 N.W. 53rd Street, Fort Lauderdale, Florida 33309
FAX: (954) 739-6409 TEL: (954) 739-6400
FLORIDA LICENSED ENGINEERS, SURVEYORS & MAPPING BUSINESS NO. 271
FLORIDA LICENSED LANDSCAPE ARCHITECTURE BUSINESS NO. C00014
RE. COPYRIGHT © 2015

MATERIAL SHOWN HEREIN IS THE PROPERTY OF CRAVEN THOMPSON & ASSOCIATES, INC. AND SHALL NOT BE REPRODUCED OR IN PART WITHOUT WRITTEN PERMISSION OF CRAVEN THOMPSON & ASSOCIATES.

ATLANTIC FLEET WASH
1501 WEST ATLANTIC BLVD.
POMPANO BEACH, FLORIDA

PREPARED FOR:
KAJA PROPERTIES INC.

LANDSCAPE BUFFER SECTION LAYOUT

Nicole D. Pastre
Florida R.L.A. No. 6667397
2025-09-08

PROJECT NO.
24-0055-001-01

LP-3
SHEET ____ OF ____